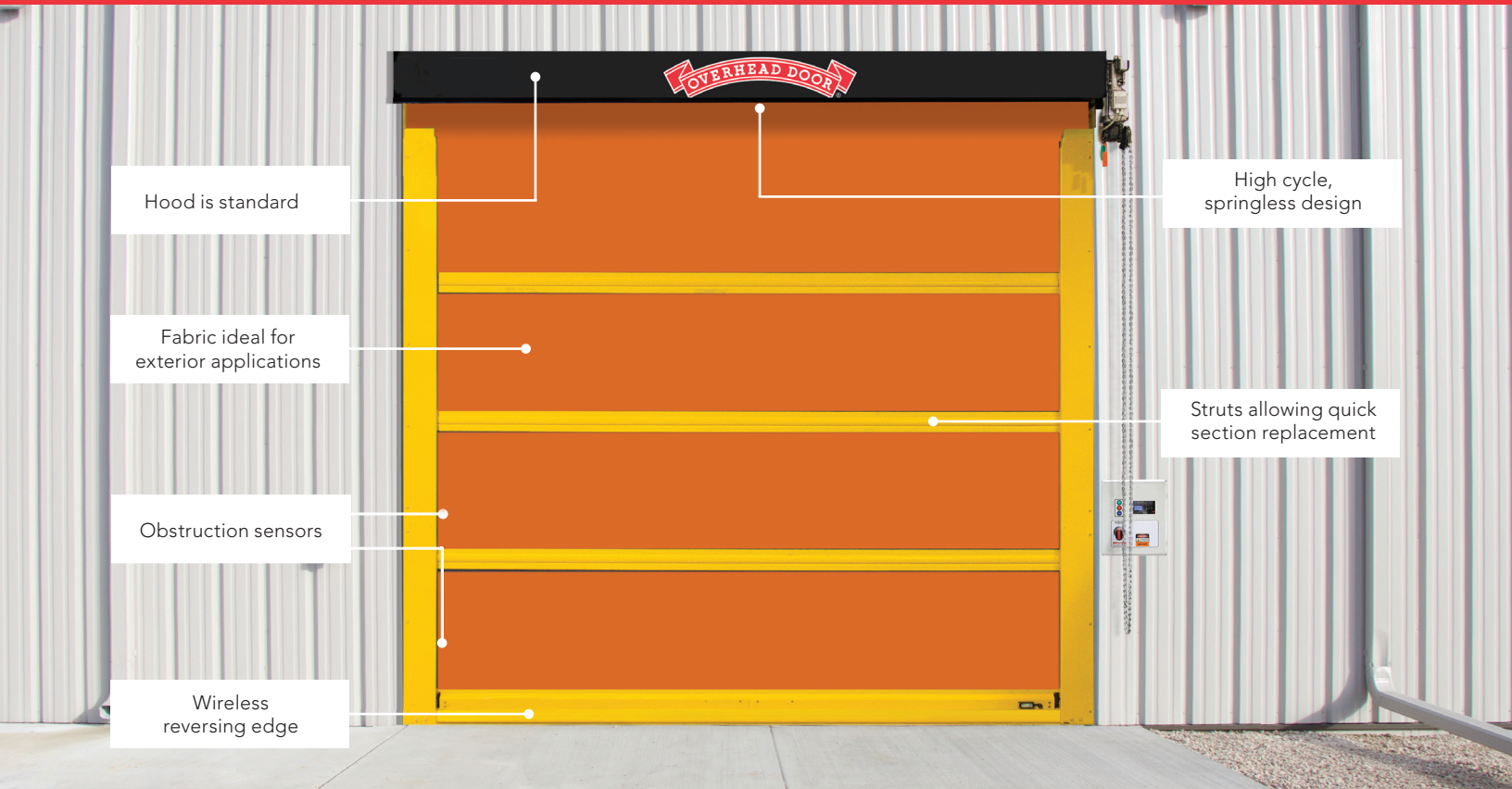




## STRUTTED EXTERIOR HIGH SPEED FABRIC DOOR

**PERFECT FOR MANUFACTURING, PARKING GARAGES, AUTO/TRANSIT, FOOD AND BEVERAGE, WAREHOUSE AND DISTRIBUTION FACILITIES**

- **Engineered for high cycles**
  - Springless design for minimal maintenance
  - Direct-mounted gear drive minimizes wear and tear
  - Variable frequency drive eliminates sudden jolts from door start/stop
- **Rugged fabric construction** used for 3-ply curtain
- **Strut design** allows for quick section replacement, while reducing curtain deflection under pressure
- **Low maintenance** breakaway design with impact detection and push button self-repair; plug and play wiring



INDUSTRY LEADING  
COMMERCIAL & INDUSTRIAL SOLUTIONS

## MODEL 993 STRUTTED EXTERIOR HIGH SPEED FABRIC DOOR

Attributes	General specifications
Application	Exterior
Maximum width	16'
Maximum height	15'
Opening speed	Up to 65"/sec
Closing speed	Up to 40"/sec
Break-away self reset	Yes
Pressure/wind resistance*	Up to 4.0 PSF or 76 MPH
Operational pressure **	Up to 2.5 PSF or 53 MPH
Wind strut	1" strut standard
Door panel	3 layers of PVC-coated polyester with 2 layers of polyester weave
Vision option	20" high windows spaced evenly across width of door
Operation	Direct drive motor and gearbox system with a door stop device
Control	Variable frequency drive NEMA 4X cULus listed Onboard self diagnostic and service reminder Built-in padlockable field disconnect
Obstruction detection	Infrared sensors mounted in-plane to the door curtain at 18" and 50" - 54" from floor
Reversing safety edge	Wireless reversing edge
Electrical availability	120V AC 1PH; 230V AC 1PH; 230V AC 3PH; 460V AC 3PH; 575V AC 3PH
Actuation options	Push button, key switch, pull switch, loop detector, motion detector, treadle switch, radio control
Signaling device options	Red/green LED warning light, horn/strobe combination, rotating warning light
Warranty	5-Year Limited

\* Pressure/wind resistance value is the ultimate pressure tested at door width of 16'. The mph is determined in accordance to ASCE 7-10 EXP B.

\*\* Operational pressure value is the pressure tested up to 100,000 cycles at door width of 16'.

### Color options



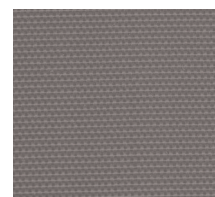
Red



Blue



Orange



Gray

Standard color for guides, brackets, struts and bottom bar is yellow. 197 optional RAL powder coat colors are available.

Actual colors may vary from brochure due to fluctuation in the printing process. Always request a color sample from your Overhead Door Distributor for accurate color matching.



INDUSTRY LEADING  
COMMERCIAL & INDUSTRIAL SOLUTIONS



2501 S. State Hwy. 121 Bus., Suite 200, Lewisville, TX 75067  
1-800-929-DOOR • sales@overhaddoor.com  
overhaddoor.com